



# HISTORIC HAWAII FOUNDATION

HISTORIC HAWAII NEWSLETTER

VOLUME 16, No. 2 JULY 2006

## Chinatown Receives 'Preserve America' Designation

City and County of Honolulu Mayor Mufi Hannemann and John Nau III, Chairman of the White House Advisory Council on Historic Preservation, announced on May 23rd that Chinatown has been designated as a "Preserve America Community Neighborhood." The announcement came at a reception co-hosted by the Historic Hawai'i Foundation at the 'Iolani Palace Barracks to honor Nau's visit to Honolulu.

"This designation will help us protect and promote Chinatown's historic resources and make Chinatown eligible for federal historic preservation funds," said Hannemann. "This will help our efforts to develop Chinatown as a culture and arts center while ensuring we maintain its rich historic legacy for future generations."

Nau visited Honolulu and Waimea on the Big Island in late May to discuss historic preservation and burials issues with Native Hawaiians.

"Chinatown is the first place in Hawai'i to receive a Preserve America designation of any kind," said Nau.



PHOTO BY SCOTT CHEEVER

The Wo Fat Building in the heart of Chinatown exemplifies the period architecture that led to the national recognition.

"And it's only the seventh neighborhood in the nation to be designated a Preserve America Community Neighborhood."

Preserve America is a White House initiative that was developed with the

Advisory Council on Historic Preservation, the Department of Interior, Department of Commerce and other federal agencies. The program initially focused on designating Preserve America Communities.

*(continued on page 3)*

## Waimea named one of America's Dozen Distinctive Destinations

Waimea town on Kaua'i is included on the National Trust for Historic Preservation's 2006 list of distinctive destinations across America. The only listing in Hawai'i, the historic community of Waimea was recognized for its extraordinary work in protecting its local heritage through preserving and maintaining its architecture and culture and celebrating its history from pre-contact to modern times. The community was also noted for well-managed growth, a commitment to historic preservation, an economic base of locally-owned

small businesses and providing a variety of activities for families, individuals and visitors.

Waimea was selected as one of 12 destinations from among 93 communities in 39 states. NTHP said that the annual list celebrates unique and lovingly preserved communities. NTHP President Richard Moe stated that "The town celebrates its culture and heritage not only on special occasions, but in everyday life, making Waimea a jewel in plain sight."

## From the Director's Chair

### **Kiersten Faulkner, Executive Director**

Historic Hawai'i Foundation's 32nd annual meeting on May 18 was attended by some 80 members and guests, who came to reconnect and recommit with others working to preserve Hawai'i's unique heritage. The event combined heritage tourism—visiting the USS Bowfin and Submarine Museum—with celebration of the people and projects that exemplify good preservation practices. The evening's highlights were the 31 Annual Preservation Honor Awards and the 30th Anniversary of HHF's Charter Members. Members also elected a dynamic slate of new Trustees and officers. We welcome these new Trustees as they add their



Kiersten Faulkner

perspectives and experience to that of the continuing members of the board. Together, this is an exciting and thoughtful group of leaders who will

shepherd the next year of the organization.

The coming year will see HHF focus on several key objectives.

First, as the statewide leader for preservation policy and advocacy, we will engage our state and county officials in the importance of recognizing and preserving our heritage and developing public policies and programs related to historic resource protection, community revitalization and design, tax incentives, rural preservation, funding streams and strategic public

investments. Second, we will actively lead and support our preservation coalition in protecting critically important cultural landscapes and precious places throughout the state. Third, we will explore the idea of developing a technical assistance bureau to work with home owners, community organizations, the business community, public agencies and elected officials on the nuts and bolts of preservation implementation.

These initiatives will require the help of members and volunteers as we pursue this ambitious agenda. If you would like to donate time, money or other resources to one of HHF's programs or initiatives, please contact the office at 808-523-2900 or [preservation@historichawaii.org](mailto:preservation@historichawaii.org). Together, we can continue to pursue the best ideas and coalitions to keep Hawai'i's past a useful, living part of its present.

## HHF Announces New Volunteer Opportunities

Historic Hawai'i Foundation has been the most successful when its members have been the most active in the areas that they are the most interested in and the areas where they are most comfortable.

In order to better harness the true power of Historic Hawai'i's members, we introduce seven committees in which members may become involved. Many of the committees are ones with which members are familiar, a few make their return from the past, and there are also several new committees for involvement.

Time commitments will vary depending on how involved you choose to be. By filling out the form on page 9 indicating committees in which you are interested, you will receive notification of the next committee orientation meeting. At this meeting, you will receive meeting dates and additional information about the committee's activities.

### **Revenue & Fundraising**

A standing committee of Trustees and Members, the Revenue Committee develops the organization's revenue

goals and strategies, including fundraising events, membership drives, contributions, gifts, grants, planned giving, fees for 2service revenue lines and endowment campaign. The Revenue Committee's targets for annual income are provided to the Finance and Audit Committee for use in developing the annual preliminary budget.

*Current projects: overall revenue strategy, planned giving and Endowment Campaign.*

Ted Rachlin, Chair

Staff: Jill Byus Schorr

Time Commitment: Quarterly meeting, plus special events

Committee criteria: Interest in membership development, fundraising and revenue lines.

### **Winter Benefit/ Kama'aina of the Year**

An ad hoc committee of Trustees and Members, the Winter Benefit Committee produces the Kama'aina of the Year annual event. Tasks include Honoree Selection, Event Management, Auction and Table Sales.

Time Commitment: Monthly meetings; more in November

Committee criteria: Interest in event management, auctions and sales

Critical Date: December 2nd, 2006

### **Preservation Parade**

An ad hoc committee of Trustees and Members, the Preservation Parade Committee organizes the annual parade of homes. Tasks include Home Selection, Sponsors and Event Management.

Staff: Jill Byus Schorr

Time Commitment: Intense in July

*(continued on page 9)*

*Historic Hawai'i Newsletter*

is published quarterly by

Historic Hawai'i Foundation

680 Iwilei Road, Suite 690

Honolulu, HI 96817

Phone (808) 523-2900

Fax (808) 523-0800

E-mail: [preservation@historichawaii.org](mailto:preservation@historichawaii.org)

Website: [www.historichawaii.org](http://www.historichawaii.org)

## Coming Soon: **The Electronic News**

Beginning in July, Historic Hawai'i Foundation will be sending out e-mail alerts to members who have submitted their email addresses to receive updates from us. Should you decide that you do not want to receive these updates, please let us know by either contacting the office or by unsubscribing at [www.historichawaii.org](http://www.historichawaii.org).

If you would like to receive these updates, please send your e-mail address to: [member@historichawaii.org](mailto:member@historichawaii.org) or sign up at the website at [www.historichawaii.org](http://www.historichawaii.org)

## 'Preserve America' Designation *(continued from page 1)*

The program recognizes communities that:

- Protect and celebrate their heritage;
- Use their historic assets for economic development and community revitalization; and
- Encourage people to experience and appreciate local historic resources through education and heritage tourism programs.

To recognize historic neighborhoods in large cities, the Preserve America Community Neighborhood program was begun in 2005. In this program, neighborhoods in metropolitan areas with populations greater than 200,000 are eligible for this special designation.

The application for Chinatown's designation as a Preserve America Community Neighborhood was submitted by the Honolulu Culture and Arts District Association with support from Mayor Hannemann, his Office of Economic Development and the Historic Hawai'i Foundation and endorsements by the Downtown Neighborhood Board, City Councilman Rod Tam, the State Historic Preservation Division and the Hawai'i Capital Cultural District.

## PRESERVATION CALENDAR

### **July 17**

Deadline for Nominations for Hawai'i's Most Endangered Places

### **August 2, 8:00 a.m. - 5:00 p.m.**

State Historic Preservation Division Preservation Symposium, Japanese Cultural Center. Call the Hawai'i State Historic Preservation Division (808) 742-7033 for more information.

### **August 11**

Preservation Parade

### **August 12, 7:30 p.m.**

22nd Annual Ka Himeni Ana Celebration; Hawai'i Theatre Center  
Tickets available by calling the Hawai'i Theatre box office at 528-0506.  
Questions? Call Elena Martinez at 778-2945

### **October**

Preserve America Summit

### **October 30 - November 5**

NTHP Annual Preservation Conference; Pittsburg, Pennsylvania ([nthp.org](http://nthp.org))

### **December 2, 6:00 p.m.**

Historic Hawaii Foundation's  
2006 Winter Benefit and Kama'aina of the Year Celebration  
Royal Hawaiian Hotel

## Historic Hawai'i Foundation

### BOARD OF TRUSTEES EXECUTIVE COMMITTEE

Peter Apo, *President*

Katherine MacNeil,  
*First Vice President*

Frank Haas,  
*Second Vice President*

Ted Rachlin, *Treasurer*

David Cheever, *Secretary*

Timothy E. Johns, *At Large*

Tonia S. Moy, *At Large*

### BOARD OF TRUSTEES

C. Scott Bradley

William Y. Brown

Gregory C. Chun

Eric Crispin

Stanton K. Enomoto

Linda Faye Collins

Carol Fukunaga

Peter S. Ho

Lea Hong

Robert Iopa

Cheryl Ka'uhane Lupenui

Jeffrey M.C. Lum

Lorraine Minatoishi Palumbo

Curt Nakamura

Michael J. O'Malley

Garrett F. Saikley

Ray Soon

Willard J. "Buzz" Stluka

Jan S. Yokota

---

### ADVISOR

Lani Ma'a Lapilio

### TRUSTEE EMERITUS

Mrs. Allyn Cole, Jr.

### EXECUTIVE DIRECTOR

Kiersten Faulkner

[kiersten@historichawaii.org](mailto:kiersten@historichawaii.org)

### DEVELOPMENT MANAGER

Jill Byus Schorr

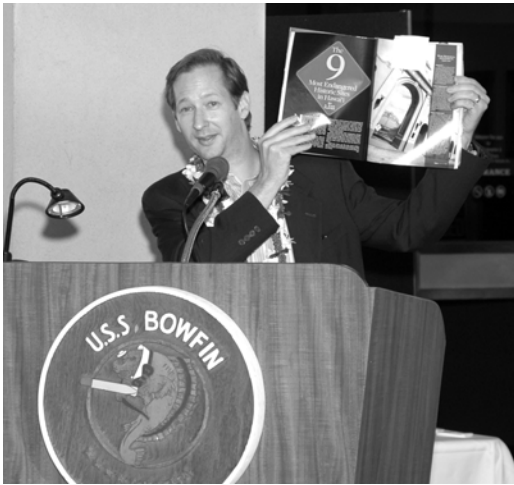
[jill@historichawaii.org](mailto:jill@historichawaii.org)

### OFFICE MANAGER

Danielle Wood

[danielle@historichawaii.org](mailto:danielle@historichawaii.org)

## HHF Elects 2006-2007 Board of Trustees at Annual Meeting



Honolulu Magazine Editor Kam Napier calls for nominations for the 2006 Most Endangered Places (see page 5 for the nomination form).



Nominating Committee Chair Ray Soon presents the slate of candidates for new Trustees.



Executive Director Kiersten Faulkner announces the Preservation Honor Awards.

Historic Hawai'i Foundation held its Annual Meeting at the USS Bowfin at Pearl Harbor on May 18. Before the meeting, USS Bowfin Education Director, Charles Hinman gave HHF Members and guests an exclusive tour of the World War II submarine and the Museum. The annual business meeting included distribution of the 2005 annual report and approval of the financial statements. The members also elected new Trustees for a three-year-term and new officers for a one year term. After the meeting, the HHF Preservation Honor Awards were announced. Following the ceremony, the Charter Members were then honored at a reception for their 30 years of membership with HHF.

*Photos by W. Labby*



Retiring Trustee Tom Quinlan displays the inaugural President's Citation Award which was awarded to him for his outstanding work in preservation.



Honorees gather at Pearl Harbor at sunset to display their award certificates.

# HAWAII'S MOST ENDANGERED PLACES

## 2006 Nomination Form

Historic Hawai'i Foundation annually names Hawai'i's most endangered historic places in cooperation with *Honolulu Magazine* and the Hawai'i State Historic Preservation Division. The list includes buildings, objects, landscapes and communities. The list draws attention to contributors to Hawai'i's priceless heritage that are threatened by demolition, neglect, ignorance and apathy. While this designation does not protect or preserve the sites, it can raise awareness and motivate action. Nominations are sought for threatened historic resources across the state.

1. Name and location of endangered historic site: \_\_\_\_\_  
\_\_\_\_\_

2. Type of structure (check the one that best applies)

- |  |  |
|--|--|
| <input type="checkbox"/> Archaeological site | <input type="checkbox"/> Industrial site         |
| <input type="checkbox"/> Civic building      | <input type="checkbox"/> Military site           |
| <input type="checkbox"/> Commercial building | <input type="checkbox"/> Religious site          |
| <input type="checkbox"/> Dwelling            | <input type="checkbox"/> Maritime site           |
| <input type="checkbox"/> Rural Site          | <input type="checkbox"/> Engineering work        |
| <input type="checkbox"/> Object or Monument  | <input type="checkbox"/> Other: (describe) _____ |
| <input type="checkbox"/> Cultural Landscape  |  |

3. Briefly describe the site's significance, including its historical, cultural, artistic, social and/or architectural value.  
\_\_\_\_\_  
\_\_\_\_\_  
\_\_\_\_\_

4. Select the one that best describes the type of urgency.

- Disaster has occurred  
 Imminent threat  
 Pattern of destruction is evident so long-range danger exists

5. Briefly describe the current physical condition of the property, the threats to the property and the rate of deterioration.  
\_\_\_\_\_  
\_\_\_\_\_  
\_\_\_\_\_

6. Nominator \_\_\_\_\_

Organization (if applicable) \_\_\_\_\_

Address \_\_\_\_\_

Contact Name (first, last) \_\_\_\_\_

Phone \_\_\_\_\_ Email \_\_\_\_\_

### Instructions for Submitting Nominations

- Use a separate Nomination Form for each nominated site
- Attach a photo of each site (digital or printed)
- Nominations MUST be received by **July 17, 2006**

For more information call Jill Byus Schorr at Historic Hawai'i Foundation at (808) 523-2900 or e-mail to [jill@historichawaii.org](mailto:jill@historichawaii.org).

### Send Your Entries....

- Via Mail/Courier/ FedEx/UPS  
Hawai'i's Most Endangered Places  
Historic Hawai'i Foundation  
680 Iwilei Road, Suite 690  
Honolulu, HI 96817
- Via E-Mail  
To Jill Byus Schorr: [Jill@historichawaii.org](mailto:Jill@historichawaii.org)
- Via Fax\*  
(808)523-0800  
\* Please be sure to send the photo via mail or email if you fax your form

## Historic Hawai'i Foundation Names the 2006 Honor Award Recipients

Historic Hawai'i Foundation announced the recipients of the 2006 Preservation Honor Awards on May 18.

### PRESERVATION CERTIFICATES FOR AN INDIVIDUAL

HHF honored the contributions to the cause of preservation through their activities with Malama o Mānoa of **Patricia Avery, Linda LeGrande** and **Joan Dempster**. This triumvirate of volunteers has been the driving force behind Mānoa's successful house tours for many years.

### PRESERVATION COMMENDATIONS FOR AN ORGANIZATION

**The Friends of Old Maui High School** is a community based grassroots organization formed in 2004 to rescue Maui's historic school from years of neglect and deterioration and to restore it to purpose and prominence—as a community resource education facility. After restoration, this building designed by famed Hawaii Architect Charles W. Dickey, will be known as the Patsy Mink Center.



Old Maui High School

### **East-West Center**

#### ***"Japanese Temple Architecture in Hawaii" Exhibit***

The East – West Center has exhibits focusing on the continuity and preservation of traditional culture. By highlighting aspects of traditional culture that are under threat of modernity or larger cultural hegemony, the East – West Center helps traditional artists, bearers of traditional arts, and institutions to strengthen their ability to preserve vital aspects of their artifacts, arts and culture. We are honoring the organization for presenting an excellent and timely exhibit entitled "Japanese Temple Architecture in Hawaii." This exhibit was created by Dr. Lorraine Minatoishi Palumbo, the leading scholar on Hawai'i's Buddhist Temple architecture, photographer Paul Chesley, and curator Michael Schuster. The exhibit targeted those interested in historic preservation, preservation specialists



The East-West Center's exhibit, "Japanese Temple Architecture in Hawai'i," was attended by 5,000 persons.

and architects. It was attended by approximately 5,000 persons.

### **County of Hawaii, Department of Parks and Recreation** ***Old Waimea Courthouse, Tax Office and Fire Station***

The architectural details of the Old Waimea Courthouse, Tax Office & Fire Station were restored through the diligent efforts of the staff at this agency. This restoration effort greatly enhances the architectural heritage of Waimea and is a successful example of adaptive re-use of civic buildings. The award was given to Pat Englehard and James Komata of the County of Hawai'i Department of Parks and Recreation.

### PRESERVATION HONOR AWARDS FOR PUBLICATIONS

***Na Lani Kaumaka: Daughters of Hawai'i: A Century of Historic Preservation*** tells the story of the Daughters of Hawai'i and echoes their mission: to perpetuate the memory and spirit of old Hawai'i. The book was written by Barbara Del Piano, who received the award along with Daughters of Hawai'i Executive Director David Scott.

Landmarks that have benefited from the efforts of the Daughters are covered extensively and each has its own chapter. They include the cliffside plaque that marks the 1795 Battle of Nu'uuanu on O'ahu; the birth stone of Kaiuikaouli — King Kamehameha III — at Keauhou Bay; Hanaiakamalama or the Queen Emma Summer Palace on O'ahu; Hulihe'e Palace in Kailua on the Big Island and Kukaniloko, a birthing place reserved for the highest-ranking ali'i near Wahiawa, O'ahu.

### **Kona Historical Society**

Sheree Chase accepted two awards for publications of the Kona Historical Society. ***Historic Kailua Village Map*** is a 24-page booklet that is the sole publication devoted to the history of one of the most historic neighborhoods in our island state. Published in 2005, the booklet contains archival photographs, maps and information about 11 historic areas in the town of Kailua on the Kona Coast.

***"E Pili Ana No Kona"*** is a 17-minute video that presents an overview of Kona history beginning with the arrival of Captain James Cook in 1779. This video focuses upon the contributions made by Kona's culturally diverse immigrant communities in the 19th and 20th centuries and the built environment associated with these communities. It was designed to work in tandem with ***Guide to Kona Districts: Ancient Historic Heritage Places***.

**Mo'ili'ili Community Center**, represented by Executive Director Rebecca Ryan, received an award for its history of the neighborhood. ***Mo'ili'ili – The Life of a Community*** reflects upon a community that has survived over time with spirit, life growth and change. The book is a comprehensive compendium of the social, economic and environmental aspect of the community from pre-historic times to the present. It is the first thoroughly researched, extensively documented history of Mo'ili'ili.

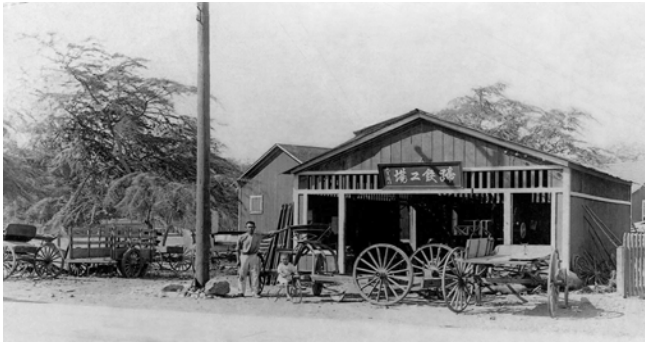


PHOTO COURTESY OF MO'ILILI COMMUNITY CENTER

The award-winning book “Mo’ili’ili – The Life of a Community” tells the rich history of the community through rare photographs and comprehensive research. PHOTO BY CAROL OMURO SAITO

**PRESERVATION AWARD FOR A SPECIFIC BUILDING SITE, PROJECT OR STRUCTURE**

**Belt Collins & the State Department of Transportation, Highways Division.**

The Kuhio Roadway/Route 560 Historic Roadway Corridor Plan is the first of its kind in the state to recognize the historic value of a roadway corridor and establish protective design provisions. The plan includes a framework for decision-making and future agency actions that incorporate non-traditional design standard which emphasize historic preservation, restoration, rehabilitation and maintenance in lieu of demolition. The plan includes a sensitive design approach that can act as a model for other historic roads in the state.

**James Stiebinger  
Kaluakini House, Lahaina**

On historic Front Street in Lahaina, where many of the charming old cane houses have been razed in favor of larger and more modern dwellings, stood a mysterious house buried in overgrown shrubbery and cast off junk. Many people were intrigued with the structure, not quite being able to make out anything but sketchy outlines of a once elegant home through the tangle of trees and shrubs that hid the home from view. The home was in desperate condition and many thought it was beyond saving. However, James Stiebinger, a custom builder whose specialty was building restoration, decided to take on the most difficult restoration project of his life, the Kaluakini house at 450 Front Street. The project would consume almost two years of his life - a frustrating, painstaking, expensive, exhausting restoration. The result is a complete restoration of this beautiful structure to a new life.



The Kaluakini House, once buried in overgrown shrubbery (left), now has a new life (right) thanks to the restoration efforts of James Stiebinger.

**Nancy & Ronald Knaack  
Hale Kealoha, Kapa’a**

Historic elements of **Hale Kealoha**, a private home located on Kealoha Road, Kapa’a, have been sensitively restored. Parts of the historic fabric that had been removed or were deteriorated were replaced in kind. The historic elements of the home were maintained as the home was upgraded.

**Ruth and George Tokumi, Fung Associates and Alan Shintani, Inc.  
Manoa Road Home, O’ahu**

The exterior of this 1940-era ohana unit had been covered with vinyl siding. Other elements of its historic fabric had been altered over the years. The new owners made a commitment to recapture the home’s original architectural integrity. The historic exterior siding was restored to this residence and select period elements of the historic interior were included in the final restoration.



The historic exterior of the Tokumi’s Manoa home is now restored to recapture its original architectural integrity.

**PRESIDENT’S CITATION**

This year, HHF established a new award called the **President’s Citation**. This award is a personal recognition from HHF’s president to someone who contributes not only to the cause of historic preservation, but also specifically to Historic Hawai’i Foundation. President Peter Apo presented this inaugural award to retiring Trustee Thomas Quinlan.

Tom has served as a Trustee for the past six years. During his tenure, he has actively participated in dozens of restoration projects on the Big Island. His particular passion is for plantation architecture and finding new life for old buildings. He has worked with public and private partners to find adaptive uses for vacant buildings and to restore buildings following the Secretary of the Interior standards.

Tom has also submitted many applications for buildings to be listed on the Hawai’i State and National Registers of Historic Places. In addition to his preservation activities, Tom has also donated many hours to Historic Hawai’i Foundation itself. He was instrumental in opening HHF’s satellite office on the Big Island, providing a physical presence there for the organization. He has been extremely active in membership drives and in promoting HHF throughout the county.

## Preservation Briefs

### ***Recommend a place or site for the State and National Registers***

At the request of the Hawai'i State Historic Preservation Office, Historic Hawai'i Foundation will be compiling and submitting recommendations for sites to be considered for the State and National Registers. If you would like to recommend a place for our list, please contact the Historic Hawai'i Foundation office at 523-2900 or at [preservation@historichawaii.org](mailto:preservation@historichawaii.org) by July 15th.

### ***ACHP drafts policy for Native Hawaiian outreach for preservation activities***

The Advisory Council for Historic Preservation is charged with implementing certain provisions of the National Historic Preservation Act, including a particular charge to ensure that Native Hawaiian voices, culture and values are considered when federal agencies take actions that may impact historic or cultural resources. ACHP, after initial conversations with its Native American Advisory Group, developed a draft policy to explain the importance of Native Hawaiian considerations when federal agencies are undertaking actions in the Islands. In May, ACHP staff held four public hearings in Hawai'i — two on the historic preservation draft policy and two on proposed changes to an existing policy on burials and funerary objects. The hearings were held in Honolulu and Waimea/Kamuela. The staff also conducted workshops on Section 106 consulting on both O'ahu and the Big Island. ACHP will take the comments made at the hearings and re-draft the policy for further public review and comment.

### ***Strong Foundation Grants Funds for Heritage Corridors Book***

The Strong Foundation has granted \$40,000 to HHF to write, publish and distribute a book on Hawai'i's Heritage Corridors. The book will include heritage corridors state-wide and is tentatively scheduled for publication in April for distribution in May. Primary research will occur this summer. HHF will be contacting our local preservation coalition partners to ask for input on local heritage corridors and images.

### ***Preservation Roundtable identifies issues, trends, opportunities***

Historic Hawai'i Foundation and the National Trust for Historic Preservation (NTHP) convened a Roundtable of preservation partners on April 4, to discuss current issues and trends related to preservation in Hawai'i.

The meeting goals were to network and build coalitions among members of the preservation community; define the preservation trends and issues we face in Hawai'i; determine ways that the preservation community can work together; and discuss how National Trust for Historic Preservation can support preservation efforts in Hawai'i. Major issues identified by the group included privatization of military

housing, cultural and heritage tourism, emerging interest in cultural landscape preservation, land use and new development, securing sustainability and quality growth; and public policy and regulatory issues.

The Roundtable was attended by some 30 people representing preservation professionals, advocates, elected and appointed officials, advisors and interested lay persons from the islands of O'ahu, Kaua'i and Hawai'i. It was hosted by the Daughters of Hawai'i at Queen Emma Summer Palace.

### ***NTHP holds Western Regional Advisors and Partners Meeting on Kaua'i***

The National Trust for Historic Preservation held its annual Spring Meeting for its Advisors and Partners in Hanalei in early April. In addition to NTHP Trustee Mary Cooke, NTHP Advisor Lani Ma'a Lapilio and HHF Executive Director Kiersten Faulkner representing Hawai'i, the meeting was also attended by Advisors and Partners from California, Arizona, Oregon, Washington and Rhode Island. The sessions included visits to Limahuli Gardens, the Waipa Foundation, Waioli Mission House Museum, the Haraguchi Rice Mill, and the Hanalei National Wildlife Refuge. The meetings at Hanalei Community Center included extensive discussions of cultural landscapes and preservation, as well as a presentation by HHF President Peter Apo entitled "The Impact of the Global Economy on Heritage and Culturalism. Through Hawaiian Eyes: Is Your Town Next?" The gathering also included meetings with local preservationists, including Pat Griffin and Mary Requilman of the Kaua'i Historic Preservation Society, Melanie Chinen of the State Historic Preservation Division, and State Representatives Corinne Ching and Hermina Morita.

### ***HHF and HCAD co-sponsor Forum for Innovative Strategies in a Historic District***

HHF joined Honolulu Culture and Arts District, Nu'uanou Merchants Association and the Hawai'i Community Foundation in sponsoring "Building a Better Neighborhood: A Forum on Innovative Strategies in a Historic District" on June 26 & 27. The Forum, followed the City and County of Honolulu's Chinatown Summit.

The purpose of the Forum was to explore innovative ways nonprofit organizations, area businesses, landowners and city/state government can work together to implement economic revitalization strategies and assist neighborhoods in transition. The Forum addressed both broad urban issues as well as specific strategies through case study of the Downtown Denver Partnership. The first day gave participants an overview of urban planning issues that have been addressed in downtown Denver. The second day addressed the specific "nuts and bolts" of a cooperative strategy/model amongst non-profits and other area stakeholders in Downtown Denver used to successfully revitalize the area. This information-gathering forum provided an opportunity to learn about best practices and mistakes to avoid from other places as we tailor an approach specifically for Honolulu.

*(continued on page 10)*

## Volunteer Opportunities *(continued from page 2)*

Committee criteria: Interest in home tours, preservation and architectural information, event management  
Critical Date: August 11, 2006

### **Program Committee**

A standing committee of Trustees and Members, the Program Committee develops and implements the organization's regular programs, education and membership events.

*Current projects: Annual Honor Awards, Keiki Coloring Contest, Annual Meeting, Annual Preservation Conference and Experts at the Palace.*

Staff: Danielle Wood

Time Commitment: Quarterly meetings; more in April-May

Committee criteria: Interest in education, preservation and conference planning

### **Communications Committee**

An ad hoc committee of Trustees and Members, the Communications Committee oversees member communications (annual report, quarterly newsletter, and website) and other publications, including books.

The committee also oversees broadcast media programs and HHF productions. The committee develops public relations policies and strategies.

*Current projects: book on Heritage Corridors; Hawai'i's Most Endangered Places program; Olelo program on Heritage Tourism; updated website; archive preservation; Speaker's Bureau and member communications.*

David Cheever, Co-chair

Frank Haas, Co-chair

Staff: Jill Byus Schorr.

Time Commitment: Monthly meetings

Committee criteria: Interest in marketing, public relations, publishing and communications

### **Public Policy and Advocacy**

An ad hoc committee of Trustees and Members, the Public Policy and Advocacy Committee is active in hands-on preservation, including developing public policy and legislation, Section 106 consultation, preservation incentive programs, and advocacy for preservation of historic places, buildings and communities.

*Current projects: Neighborhood Revitalization Forum; developing a 2007 legislative agenda; Preservation Roundtables; U.S. Navy and U.S. Marine Corps Programmatic Agreements on Public Private Venture to privatize housing; Feasibility Study for a National Heritage Area for the Hawaii Capital Cultural District; Preservation Awareness Day at the Capitol; City and County of Honolulu Preservation Tax Rebate Program; partnerships on preservation activities with other organizations.*

Peter Apo, Co-chair

Carol Fukunaga, Co-chair

Time Commitment: Monthly; more often in July-September and January-May.

Committee criteria: Interest in public policy, planning, regulations and preservation-related issues.

### **Real Property**

An ad hoc committee of Trustees and Members, the Real Property Committee is active in restoration and re-use plans for historic properties.

*Current projects: Spencer Beach Caretaker's Cottage, re-use plan for Ala Moana Pumping Station, preservation of Jean Charlot House.*

Time Commitment: Quarterly meetings

Committee criteria: Interest in construction, preservation techniques, property management and real estate.

## VOLUNTEER COMMITTEE SIGN UP FORM

Member Name: \_\_\_\_\_

Phone Number: \_\_\_\_\_ E-mail Address: \_\_\_\_\_

I am interested in joining the following committee(s):

Revenue & Fundraising

Winter Benefit/Kama'aina Of The Year

Preservation Parade

Endowment Campaign

Program Committee

Communications Committee

Public Policy and Advocacy

Real Property

*Please fax to 523-0800*

*or mail to: Historic Hawai'i Foundation  
680 Iwilei Road, Suite 6690  
Honolulu, HI 96817*

## Grants for Homeowners and Nonprofits Available Through HHF and HCF

**H**istoric Hawai'i Foundation has announced a new preservation grant program for historic residential or commercial building improvements. Through a grant from the Hawai'i Community Foundation's Historic Preserves of Hawai'i Fund, HHF is able to distribute four grants of \$1500 to homeowners or non-profit organizations.

"We realize that private owners of historic homes and non-profit organizations are at a disadvantage in obtaining any grant money for building improvements; yet these are the people in our community who are doing actual preservation work and helping to maintain the character of our neighborhoods," said Kiersten Faulkner, HHF's executive director. "Although these grants are small, this is an opportunity for us to support their preservation efforts and offer them some encouragement."

Grants will be awarded for restoration or rehabilitation work for stabilization, windows and entryways or exterior finishes. To be eligible, buildings must be listed on the National or Hawai'i State Register of Historic Places, either as individual structures or as a contributing building in a district. For other eligibility and program requirements, please see the guidelines and application information below.

### **APPLICABILITY**

Grants will be awarded for restoration or rehabilitation work in three categories:

1. **Stabilization:** such as foundation stabilization, leveling, repair of water, termite, fire or other damage, or prevention of collapse.

2. **Windows and Entryways:** such as restoration or rehabilitation of windows, exterior doors and entryways.
3. **Exterior Finishes:** such as painting, removing vinyl siding or restoring original walls or finishes.

### **ELIGIBILITY**

- The structure must be listed on the National or Hawai'i State Register of Historic Places, either as an individual structure or as a contributing building to a district.
- Houses must be in residential use. Commercial uses in residential structures (e.g. Bed and Breakfast) are not eligible. Commercial office, retail, civic and other publicly-accessible buildings are eligible.
- Non-profit organizations must be registered as 501(c)(3) organizations.
- Grant recipients must be members of Historic Hawai'i Foundation.

### **APPLICATION**

Send a letter of application, including a project description, proposed use of grant funds, compliance with eligibility requirements and contact information to Kiersten Faulkner, Executive Director, Historic Hawai'i Foundation, P.O. Box 1658, Honolulu, HI 96806 or via email to [Kiersten@historichawaii.org](mailto:Kiersten@historichawaii.org)

For additional information, please call Historic Hawai'i Foundation at (808)523-2900 or see the additional guidelines published on our website at <http://www.historichawaii.org>

## Preservation Briefs *(continued from page 8)*

Specific topics included Denver's plan to end homelessness, innovative funding for culture and arts, transit solutions, and a comprehensive planning for historic downtowns. Breakout sessions addressed public-private partnerships, landowner and business improvement district issues, and non-profit structure and roles.

### ***State announces Grant in Aid awards for historic properties and organizations***

The 2006 legislative session included several grant in aid awards to preserve, restore and rehabilitate historic properties. These capital grants included \$250,000 for façade restorations on Chinatown's Hotel Street; \$375,000 for Washington Place; \$900,000 for 'Iolani Palace; \$400,000 for the Hawai'i Heritage Center; \$1,500,000 to restore the Aquarius mosaic at the State Capitol; \$1,000,000 for

Kawaiahao Church; and \$3,000,000 for YWCA of Oahu. The state also granted operating funds to Kona Historical Society (\$50,000) and Friends of Iolani Palace (\$600,000).

### ***Preservation Celebration held at State Capitol kicks off Preservation Month***

Observation of May as Historic Preservation Month began with an official proclamation from Governor Linda Lingle declaring the first Monday in May to be Historic Preservation Day. Representative Corinne Ching organized three days of preservation awareness activities on May 1, 2 and 3, including a preservation fair of exhibits, walking tours of the Capital District and a speakers' series. The celebration wrapped up with a reception at Washington Place.



*Historic Hawai'i Foundation is a non-profit organization devoted to historic preservation and heritage education in Hawai'i.*

**HISTORIC HAWAII FOUNDATION**  
680 Iwilei Road, Suite 690  
Honolulu, Hawai'i 96817

Nonprofit  
Organization  
U.S. Postage  
**PAID**  
Honolulu, Hawai'i  
Permit No. 1301

## Historic Hawaii Membership Application

Print name as you wish it to appear in the Annual Report

Dr.     Mr.     Mrs.     Ms.     Miss     Mr. & Mrs.     Other: \_\_\_\_\_

First Name / Last Name: \_\_\_\_\_

Address: \_\_\_\_\_

City: \_\_\_\_\_ State: \_\_\_\_\_ Zip: \_\_\_\_\_

Email: \_\_\_\_\_ Day Phone: \_\_\_\_\_

Please do not add my e-mail to the newsletter list.

**Membership Type:**     New     Renewal     Corporate/Org     Charter

Please do not print my name in publications

### Corporate & Individual

- Heritage Leader            \$10,000
- Heritage Patron             \$5,000
- Heritage Benefactor       \$2,500
- Heritage Associate         \$1,000
- Preservation Sponsor       \$500
- Preservation Supporter     \$250

### Individuals Only

- Preservation Partner       \$100
- Family                         \$50
- Individual                     \$35
- Student/Senior              \$25

Additional Donation of \$ \_\_\_\_\_ is enclosed.

### PAYMENT INFORMATION

Enclosed is my check or money order made payable to **Historic Hawai'i**.

Please charge to my:     VISA     MasterCard

Credit Card #: \_\_\_\_\_

Exp. Date: \_\_\_\_ / \_\_\_\_    Cardholder Signature: \_\_\_\_\_

Historic Hawaii Foundation is a 501(c)3 tax exempt organization. Memberships are tax deductible, as allowed by law.

***Mahalo for your support!***