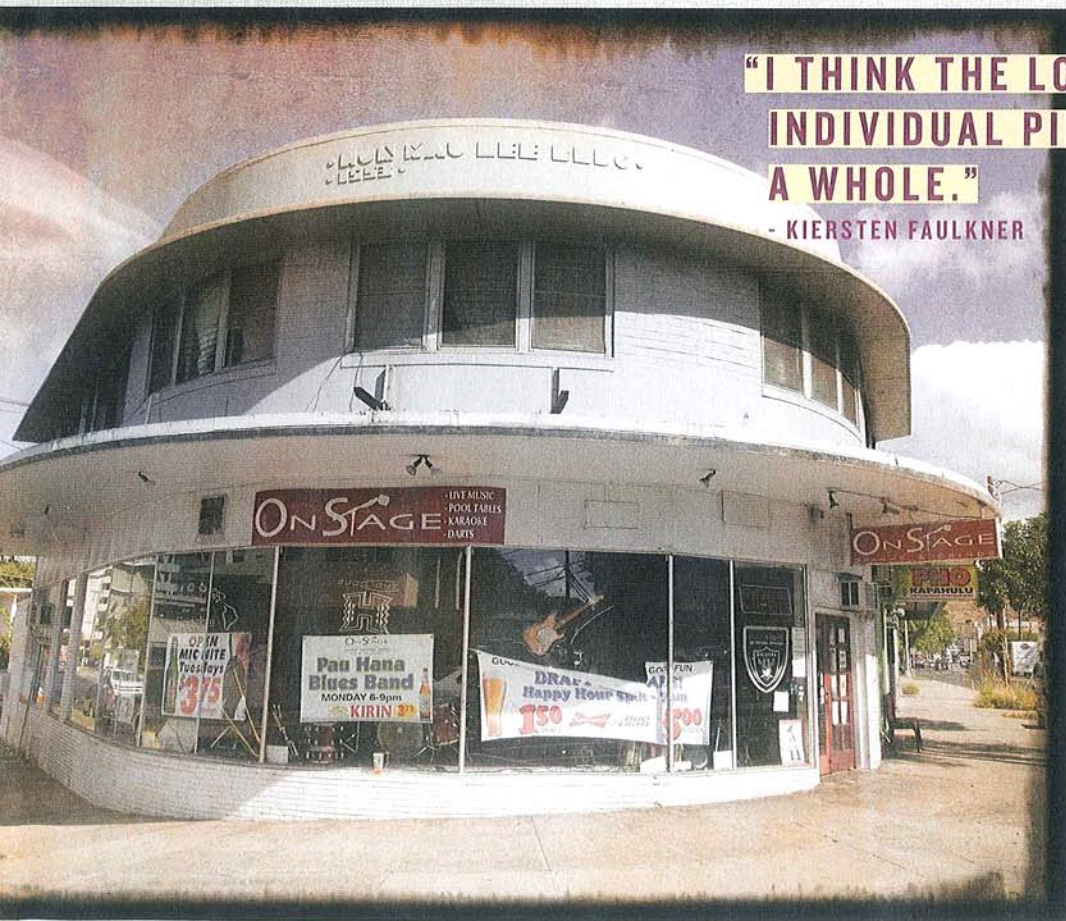
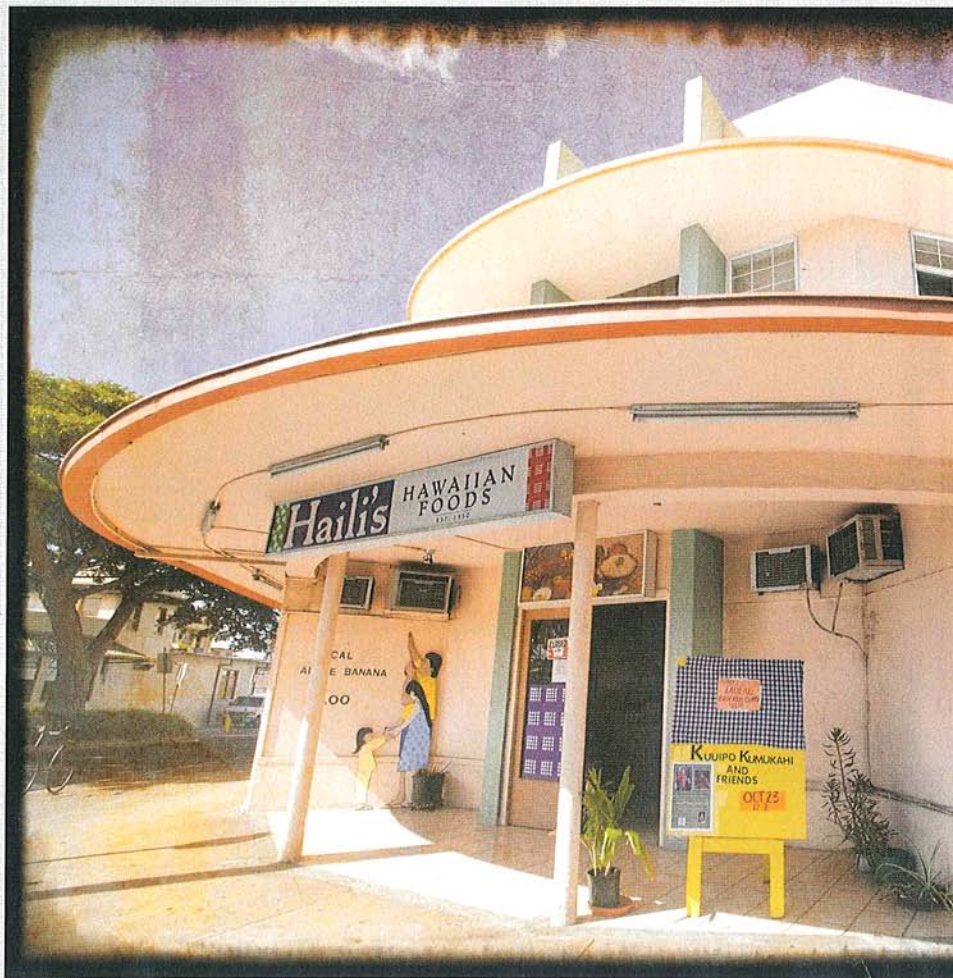


KAPAHULU ART MODERNE BUILDINGS (HONOLULU, O'AHU)

WHAT IS IT?

There's something urban and cool about Kapahulu Avenue, but you probably can't put your finger on exactly what it is. Look closely at the building that houses Haili's Hawaiian Foods on the corner of Kapahulu and Palani Avenues, and you'll see the art moderne aesthetic that is at Kapahulu Avenue's core. A more obscure (and cheaper) cousin of art deco, art moderne stresses curving lines—like the one at Haili's entrance—awnings anchored with turnbuckles, horizontal lines and construction that starts right at the sidewalk, no setbacks.



**"I THINK THE LOSS OF THE
INDIVIDUAL PIECE DIMINISHES
A WHOLE."**

- KIERSTEN FAULKNER

Several years ago, Bill Chapman, director of the historic preservation program at the University of Hawai'i, took his students to do a field study on Kapahulu. "We found 46 buildings dating before 1950—most dated to the late '30s and '40s," Chapman says, and most with modernist profiles. "It created a pretty consistent pattern up and down the street."

WHAT THREATENS IT?

About halfway down Kapahulu, Peggy's Picks in the Chun Kow building has lost its awning and adopted a wild paint job. Other art moderne buildings on the street were covered with stucco, renovated or destroyed when the street was widened.



New buildings have cropped up that are set back from the street and don't mesh with the architectural style. These gradual renovations and demolitions have already done damage to the area's cohesion.

"I think the loss of the individual piece diminishes a whole," says Faulkner, of the Historic Hawai'i Foundation.

WHAT CAN BE DONE?

"The city needs to look at creating a special district there," says Chapman. "If there was a visionary person in the Planning Department it could become a real economic asset. It's been discovered by some restaurants and it's the kind of place that tourists seek out."

He also says that the city could create a façade rehabilitation program, using city money and private investment to put up awnings, repaint buildings and give business owners an incentive to harmonize with the street's architectural heritage.

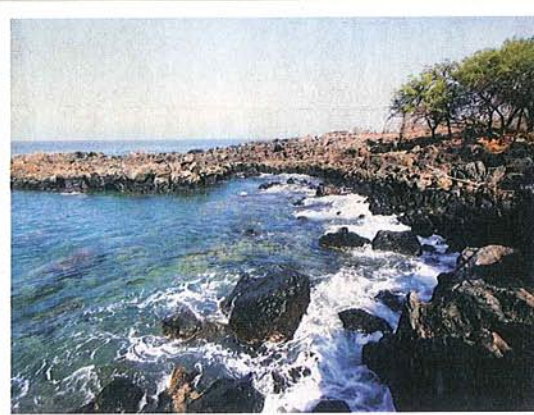
UPDATES

A LOOK BACK AT PAST ENDANGERED PLACES

LAPAKAHI (NORTH KOHALA, HAWAI'I)

In 2010, we happily reported that the state raised the money to acquire Lapakahi, a 17-acre private property completely surrounded by a state historical park, to create seamless parkland. This August, the transfer was complete, and the area will stay preserved as a state park.

PHOTO: JOSH FLETCHER



KŌLOA JODO MISSION (KŌLOA, KAUA'I)

Built in 1910 by Japanese immigrants, the Kōloa Jodo Mission had fallen into disrepair when it made the list in 2007. In 2008, when we last checked in, the renovations had begun thanks to volunteers from Japan, who also brought in builders specializing in temple architecture. In June 2010, the building was completed, and painted, and a new Japanese garden was added for the dedication.

PHOTO: COURTESY REV. KOSEN ISHIKAWA

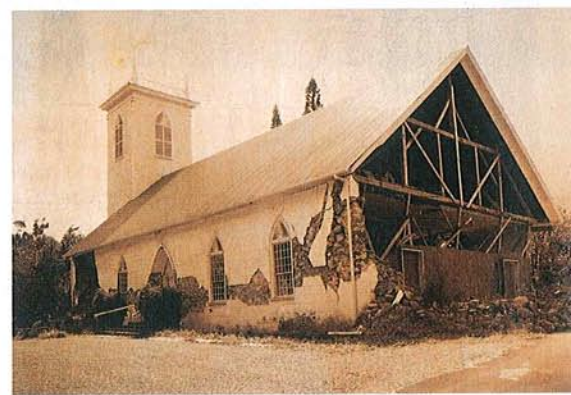
THE KALĀHIKIOLA CONGREGATIONAL CHURCH (KOHALA, BIG ISLAND)

In 2006, an earthquake took down the walls of this church, built in 1855. At the time, there was worry insurance wouldn't cover the significant cost of rebuilding all the walls.

"It was completely restored and looks better than it ever did. We finished about a year ago," says Glenn Mason, the architect hired to rebuild the church.

Mason said they were able to spare the original roof, all but one window and an arch that predates the church, which was restored using historic techniques.

PHOTO: MACARIO



"The original building was made out of rounded boulders that are actually really weak. We took most of the wall down and rebuilt it with concrete, but we used all the original stone to build a wall around the building," Mason added.

CONTINUED ON PAGE 157